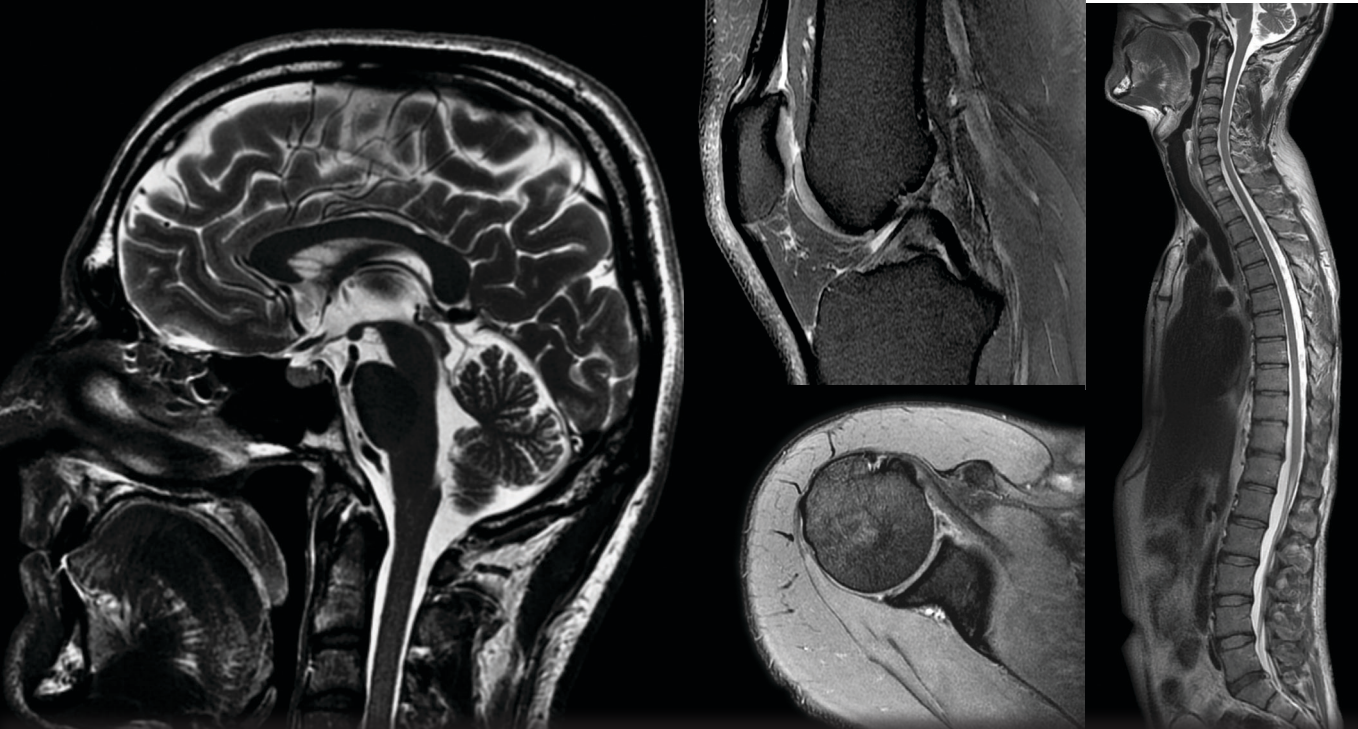


MRI Center Navicent Health
 770 Pine Street Suite L-15
 Macon, GA 31201
 478-746-1020
mricenternavicenthealth.com

World-Class Imaging
SIGNA™ Architect 3.0T



**MRI
 Center**
 NavicentHealth



SIGNA™ ARCHITECT 3.0T

Introducing the new scanning technology at the MRI Center at Navicent Health that combines the advancements in MR with the sophisticated engineering of a 3.0T wide bore system.

This new scanner provides a whole new level of patient comfort with adaptable coil designs and acceleration techniques that minimize scan times and improve image quality. This is just another example of MRI Center Navicent Health's commitment to providing our patients with the latest in diagnostic imaging technology.

This new scanner, the SIGNA™ Architect, is an incredibly versatile and adaptable system available from GE Healthcare. Built with patients in mind, the SIGNA™ Architect is redefining the imaging experience with feet-first comfort options and scan capabilities that

continue to push the conventional limits of MR. Equipped with the SIGNA™Works productivity platform, SIGNA™ Architect dramatically improves clinical performance levels through innovative applications that visualize the body like never before.

Typical MRI systems have a decibel level comparable to a jackhammer, or a speeding train. To make our patients as comfortable as possible, we added GE's SilentScan technology to our SIGNA™ Architect, which makes the scan as quiet as hearing a whisper.

Scans available with our newest technology:

Neuro-imaging

- Brain, spine, vascular and peripheral nerve anatomy with exceptional tissue contrast

Musculoskeletal imaging

- Bone, joint, soft tissue with remarkable tissue contrast, articular cartilage pathology, metal suppression imaging for joints

Abdominal and Pelvic imaging

- Abdominal: liver and bile ducts, gallbladder, kidneys, pancreas, spleen, adrenal glands, and GI tract
- Pelvic: prostate, bladder, testicles, uterus, ovaries, rectum, pelvic floor

Vascular imaging

- Arteries and veins of the brain, neck, chest, abdomen, pelvis and extremities with Contrast and Noncontrast MR Angiography

Oncologic imaging

- Staging of malignancies throughout the body, characterize tumor types and evaluate for treatment response

MRI CENTER NAVICENT HEALTH

The MRI Center is a joint venture with Radiology Associates of Macon and Navicent Health. We have over 25 years of providing world class MRI services to central Georgia. We use the latest state-of-the-art technology in conjunction with a team of over 30 specialty-trained board-certified radiologists.

We are fortunate to be among the few imaging and diagnostic centers in the state of Georgia to offer, not one, but two of the stronger high field strength (1.5 Tesla and 3.0 Tesla) scanners to all of our patients.

ADVANTAGES

- Absence of ionizing radiation
- Non-invasive technique

Capabilities include, but are not limited to:

- Flexibility to adapt to different patient types
- Sequences optimized to combat respiratory motion and increase free breathing acquisitions
- Motion insensitive sequences

